

CDCPS

FIELD GUIDE

BY: LOWER SCHOOL SUMMER
SCHOOL STUDENTS



Plants of Community Day Charter Public School
Lawrence, Massachusetts - July 2010

Common Name:
Eastern Hemlock

Scientific Name:
Tsuga Canadensis

Family: Pinaceae

Location Found:
front of lower school

Habitat Canada



Description: the eastern hemlock is an amazing tree because it can be as tall as 100 feet. The needles on the eastern hemlock are short and soft. the bark on the eastern hemlock is brown.

Plants of Community Day Charter Public School
Lawrence, Massachusetts - July 2010

Common Name:

American elm

Scientific Name:

Ulmus americana

Family:

Elm family

Location Found:

Front yard of CDCPS

Habitat:

Eastern North America

It is everywhere in the USA
except southern Florida and
Western California.

Seed Source:

Winged seeds spread by the wind

Description:

The bark is brownish, gray. The flowers are small and green.
It blossoms with stamens. The fruits are greenish, paper-thin, and half an inch long with one seed
in the center. The tree shape is big and tall. It grows in most soil conditions; prefers floodplains
and low, fertile hills.



Plants of Community Day Charter Public School
Lawrence, Massachusetts - July 2010

**Common Name: Fountain
Grass**

**Scientific Name:
*Pennisetum setaceum***

Family: Poaceae

**Location Found:
Front of lower school
building**

**Habitat: dry land, poor soil,
North Africa**



Description: Fountain Grass can grow from 1 foot up to 3 feet. It is really pretty when it has bloomed because it looks like a water fountain. It grows best in a little shade.

Plants of Community Day Charter Public School
Lawrence, Massachusetts - July 2010

Common Name:
Gorse

Scientific Name:
Ulex europaeus
(common Gorse)

Family:
Fabaceae

Location Found:
At the lower school,
in the garden

Habitat
Northern & southern
Hemispheres



Description:

The flower grows 3 ft.-10 ft. tall. The branches are mature when green and brown. The upper lipped is 2 toothed and the lower lipped is 3 toothed. Seedpods are hairy and $\frac{1}{2}$ to $\frac{3}{4}$ inches long and brown when ripe.

Plants of Community Day Charter Public School
Lawrence, Massachusetts - July 2010

Common Name:
Hosta Tratt

Scientific Name:
Plantain lilly

Family:
Liliaceae

Location Found:
Out side the school

Habitat
Korea (asia)



Description:

The colors of the flowers are purple, orange, yellow, red, blue, and green. The climate is warm for the flower. They need a bit of shade and it will come back year after year. The height is 12in.-14in.

Plants of Community Day Charter Public School
Lawrence, Massachusetts - July 2010

Common Name:

Juneberry

Scientific Name:

Amelanchier

Family:

Rose family (rosaceae)

Location Found:

At the top of the playground

Habitat

Northeastern United States

Seed Source:

The seeds are in the berry of the
Juneberry tree.

Description:

The leaf at the end it is opposite and there are two small leaves and in the middle there are big leaves and on the top there are medium size leaves. The edge is smooth. The berries help the seed grow.



Plants of Community Day Charter Public School
Lawrence, Massachusetts - July 2010

Common Name:
Dream catcher

Scientific Name: Coreopsis

Family: Asteraceae

Location Found:
Massachusetts In the summer

Habitat: Native to U.S. Rocky
Prairies, glades, bluffs, sandy
Open ground, roadsides, and
Railroads



Description: This plant is mainly used in for landscaping. Coreopsis is adapted to many soil types. It grows best on a well-drained soil.

Plants of Community Day Charter Public School
Lawrence, Massachusetts - July 2010

Common Name:
Chrysanthemum

Scientific Name:
Chrysanthemum morifolium

Family: Asteraceae

**Location Found: In front of
School building**

**Habitat: Indigenous to China
and other far Eastern
Countries**



Description: This plant has been used for several centuries as flavoring and medicine. Chrysanthemum is one of the most important medicinal and aromatic plants of Azerbaijan provinces in Iran. The Chrysanthemum industry is enormous and is found among the 10 biggest crops commercially used worldwide.

Plants of Community Day Charter Public School
Lawrence, Massachusetts - July 2010

Common Name: Marigold

Scientific Name: *Tagetes Erecta*

Family: Compositae

**Location Found: In front of
School building**

**Habitat: Central and South
America**



Description: *Tagetes erecta* was known as French marigold. Marigold plants are stout and branching. They can grow up to 60 cm tall. They are all over the world for their decorative and ornamental flowers. Marigold comes in yellow and gold to orange, red and mahogany.

ERROR: undefined
OFFENDING COMMAND: !\$2f'\n\IUE2o=a=rqLl

STACK:

Plants of Community Day Charter Public School
Lawrence, Massachusetts - July 2010

Common Name:

Sugar maple

Scientific Name:

Aceraceae Acer saccharum

Family:

Maple Family

Location Found:

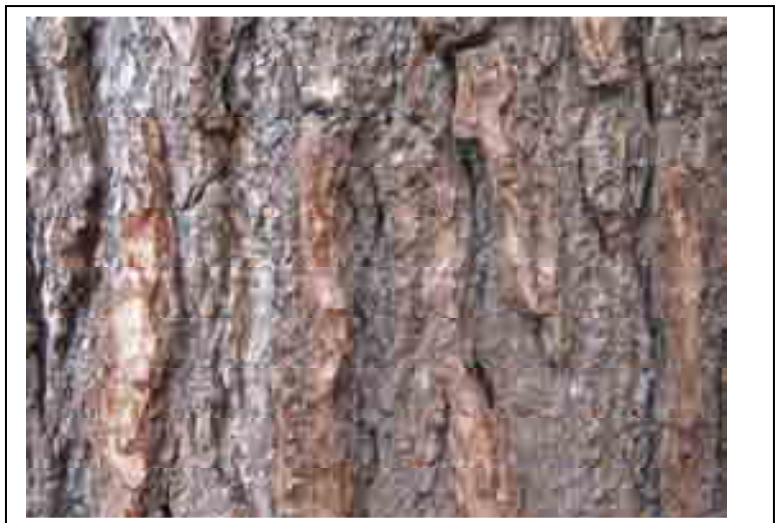
Top of the playgroud .

Habitat

North America

Seed Source:

samaras



Description:

Simple and palmately veined, 3 to 6 inches long, delicately rounded lobes. They have long and slender 1 to 3 inch stems. Brown, slender and shiny with lighter lenticels ; terminal buds brown, very sharp pointed with tight scales. The leaf has green veins in it.

Plants of Community Day Charter Public School
Lawrence, Massachusetts - July 2010

Common Name:

Eastern Hemlock

Scientific Name:

Tsuga canadensis

Family:

Pinaceae

Location Found:

In back of the playground

Habitat:

North Eastern United States

Seed Source:

Small cone

Description:

The Eastern Hemlock is a conifer tree with pointy leaves. It has flat, single needles that are ½ inch long. There is some soft, white stuff on the leaves. The branches are skinny and rough.



Plants of Community Day Charter Public School
Lawrence, Massachusetts - July 2010

Common Name: Plantain lily

Scientific Name: Hosta

Family: Agavaceae

**Location Found: out side of
School**

Habitat: Korea



Description: Plantain lilies give a blast of bold texture as well as a variety of leaf color, shapes and patterns. It will grow in moist, well drained soil. They also grow in the shade.

Plants of Community Day Charter Public School
Lawrence, Massachusetts - July 2010

Common Name:

American beech

Scientific Name:

Fagus grandifolia

Family:

Fagaceae

Location Found:

At the top of the play ground



Habitat

Eastern United States

Seed Source:

It has a nut that you can eat.

Description:

The leaves are 2to4 inches long. It has a pointy edge and it has bumpy sides. The leaves have veins.

Plants of Community Day Charter Public School
Lawrence, Massachusetts - July 2010

Common Name:

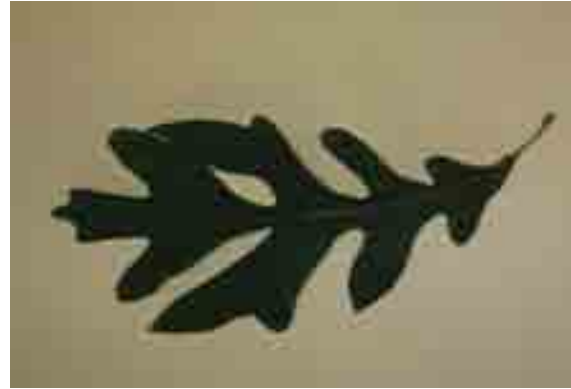
White Oak

Scientific Name:

Quercus alba

Family:

Oak trees



Location Found:

Near the front steps at CDCPS

Habitat:

Eastern U.S. lowlands



Seed source:

Acorn



Description:

Leaves are five to nine inches long. The leaves are bright green, turning wine colored in autumn. The bark is ash brown to pale gray. It had lots of scaly plates. The flowers are droopy. It has spikes of small blooms. The fruit and seeds are small and shiny oblong acorns. They are 0.5 inches to one inch long.

Plants of Community Day Charter Public School
Lawrence, Massachusetts - July 2010

Common Name: Overcup oak

**Scientific Name: Quercus
lyrata**

Family: Fagales

**Location Found: Out side of
School**

Habitat: Low, wet sites



Description: The overcup oak is a bottomland species that grows on poorly drained, alluvial or clay soils. The rough grayish brown bark is up to 1" thick, with irregular ridges and a spirally distorted look. The fruit is an acorn, which is 1" long, with a scaly cup that covers nearly 2/3 of the nut.

Plants of Community Day Charter Public School
Lawrence, Massachusetts - July 2010

Common Name: Petunia

Scientific Name: Hybrida

Family: Solanaceae

**Location Found: Front of the
Lower school.**

Habitat: South of Brazil



Description: The petunia's scientific name is hybrida. It comes from the solanaceae family. Petunia's come in many colors. For example, dusty rose, lime green, mystic pink, pink dawn, plum, and wave purple. Petunias are native to Brazil.

Plants of Community Day Charter Public School
Lawrence, Massachusetts - July 2010

Common Name:

Sugar Maple

Scientific Name:

Acer saccharum



Family:

Maple family

Location Found:

In front of CDCPS



Habitat:

Rich deep soils in uplands

Seed Source:

Sugar Maple seed



Description:

Big and pointy and it looks like the Canadian flag. Bright green leaves that are 3-5" long. They turn red and yellow in fall. They have light green winged fruits. Sugar Maples shade some of the most beautiful eastern wildflowers. Shape is oval and the height goes up to 100'. First taps are inserted into the tree trunk for the sap to drip through. Buckets are filled with clear sugary sap. The bark color is gray- brown.

Plants of Community Day Charter Public School
Lawrence, Massachusetts - July 2010

Common Name:
Wild bergomot

Scientific Name:
Monarda Fistulosa L.

Family:
Lamiaceae

Location Found:
At school in the garden

Habitat
Subshrub



Description:

The Bergemot has hairy stems and spreads seeds which pop. It has square stems with gray-green foliage. The flowers bloom June-September. When the flowers die, the whole branch will die.

Common Name: Irish moss

**Scientific Name: Chondrus
Crispus**

Family: Sagina

**Location Found: In front
yard of the lower school.**



**Habitat: Rocky coastline
North Atlantic Ocean
North America continent
Europe**

Description: The Irish moss's scientific name is Chondrus Crispus. It comes from the Sagina family. Irish moss has many different colors. For example, green blue, green brown, green yellow, green black, green white, green purple, and lime green orange. Irish moss is native to Europe.

Common Name: Boston Ivy

**Scientific Name:
Parthenocissus tricuspidata**

Family: Vitaceae

**Location Found:
on lower school wall**

Habitat: Canada



Description: The growth rate of the Boston Ivy is rapid, and it can grow up to 60 feet. The Boston Ivy grows in shade and in sunlight. The Boston Ivy sticks to buildings with its suction cup roots.

Common Name:
Chrysanthemum,
garden mums

Scientific Name:
Chrysanthemum

Family:
Asteraceae

Location Found:
Outside of the school

Habitat: Europe and
North America



Description:

There are many varieties of Chrysanthemums throughout history. Chrysanthemum's common names include pellitory, ox-eye daisy, and the sunflower.

Common Name: pot marigold

Scientific Name: Calendula

Family: Asteraceae

Location Found: Front of
lower school

Habitat: Europe and North
America



Description: Marigolds grow from May until September. A marigold is an herb with a high stem. Flowers that are fully developed are picked for many uses.

Common Name: Pansy

Scientific Name: Viola

Family: Violaceae

Location Found: Front of lower school

Habitat: Europe and North Africa



Description: The pansy plant is small. It grows up to 9 inches in both height and spread. It has many stems, comes in a variety of colors, and likes to grow in cool weather.

Common Name: Dusty Miller

**Scientific Name: Senecio
Cineraria**

Family: Asteraceae

**Location Found: front of
lower school**



Habitat: Africa

Description: The Dusty Miller is an interesting plant because all the white fur on the leaves looks like dust. The Dusty Miller needs full sunlight to grow. The bloom time for the Dusty Miller is summer. The height of the Dusty Miller can be up to 18 inches.

Common Name:

American elm

Scientific Name:

Ulmus americana

Family:

Elm family

Location Found:

Front yard of CDCPS

Habitat:

Eastern North America

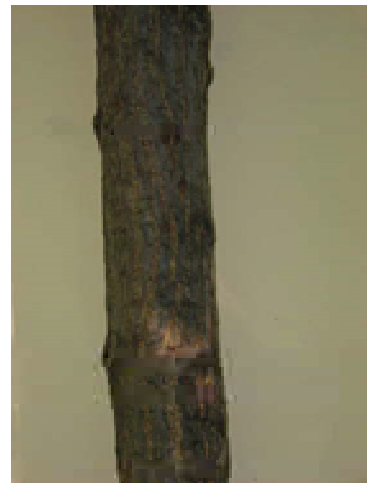
It is everywhere in the USA except southern Florida and Western California.

Seed Source:

Winged seeds spread by the wind

Description:

The bark is brownish, gray. The flowers are small and green. It blossoms with stamens. The fruits are greenish, paper-thin, and half an inch long with one seed in the center. The tree shape is big and tall. It grows in most soil conditions; prefers floodplains and low, fertile hills.



Third Grade Survey Area

We observed the trees in front of Community Day Charter Public School during July 2010. The diagram below outlines the area that we studied. We found six Elm trees, 12 Sugar Maple trees, 16 Eastern Hemlock trees, and only one White Oak tree.

